



<b>Engine</b>	Perkins1104D-44TA
<b>Gross Power</b>	74.5 kW (100 hp / 101 ps) @ 2,200 rpm
<b>Net Power</b>	72 kW (97 hp / 98 ps) @ 2,200 rpm
<b>Maximum Speed</b>	41 km/h
<b>Standard Loader Bucket Capacity</b>	1.1 m <sup>3</sup>
<b>Backhoe Bucket Capacity</b>	0.2 m <sup>3</sup>
<b>Operating Weight</b>	9,480 kg

# 777A-S MAX BACKHOE LOADER

# 777A-S MAX SPECIFICATIONS >>>

ENGINE	
Emission Regulation	Tier 3 / Stage IIIA
Manufacturer	Perkins
Model	1104D-44TA
Gross Power	74.5 kW (100 hp / 101 ps) @ 2,200 rpm
Net Power	72 kW (97 hp / 98 ps) @ 2,200 rpm
Peak Torque	410 N · m @ 1,400 rpm
Displacement	4.4 L

ELECTRICAL SYSTEM	
System Voltage	12 V
Battery Rating	95 amp-hr

DRIVE TRAIN	
Number of Drive Wheels	4 WD
1st Maximum Speed	6.6 km/h
2nd Maximum Speed	10.8 km/h
3rd Maximum Speed	24 km/h
4th Maximum Speed	41 km/h
Outside Turning Radius, front tire	4,850 mm
Outside Turning Radius, bucket	5,200 mm

BRAKES	
Service Brake Type	Wet disc
Service Brake Actuation	Hydraulic Service

TIRES	
Front Tire Size	16.9-28 12RP TL
Rear Tire Size	16.9-28 12RP TL

HYDRAULIC SYSTEM	
Circuit Type	Open
Total Flow	167 L/min
Main Relief Pressure	25.2 Mpa
Pump Type	Variable pump
Steering Type	4 WS

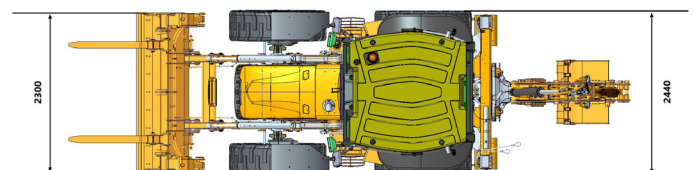
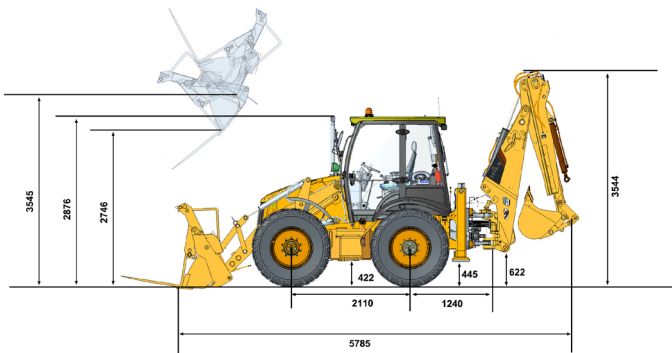
OPERATING WEIGHTS	
Operating Weight	9,480 kg

LOADER PERFORMANCE	
Bucket Capacity	1.1 m <sup>3</sup>
Standard Bucket Width (referenced)	2,300 mm
Lift Capacity at Full Height	30.2 kN
Bucket Breakout Force	59.6 kN
Maximum Dump Angle at Full Height	45°
Dump Height at Maximum Angle	2,746 mm
Dump Reach at Full Height Discharge	570 mm
Boom Lift Capacity, end, at ground	47.3 kN
Maximum Dig Depth	30 mm

BACKHOE PERFORMANCE WITH STANDARD STICK	
Standard Bucket Type (referenced)	General bucket
Standard Bucket Heaped Capacity ISO (referenced)	0.2 m <sup>3</sup>
Standard Bucket Width (referenced)	610 mm
Maximum Dig Depth	4,345 mm
Reach From Swing Pivot at Ground	5,443 mm
Turning Angle of Bucket	186°
Bucket Digging Force	58.2 kN
Dipper Digging Force, standard stick	37.5 kN
Loading Height	3,586 mm
Loading Reach from Swing Pivot	3,908 mm

SERVICE CAPACITIES	
Fuel Tank	130 L
Engine Oil	8 L
Cooling System	16 L
Hydraulic Reservoir	130 L
Hydraulic System Total	180 L
Transmission and Torque Converter	16 L
Axle, front	11.1 L
Axle, rear	16 L

STANDARD EQUIPMENT	
Perkins1104D-44TA	
Carraro Transmission	
Enclosed Cab, ROPS / FOPS with AC	
Auxiliary Hydraulic Kit	
Carraro 4 ×4 Axles	
Boom Interlock	
General Load Bucket 1.1 m <sup>3</sup>	
Seat Belt	



## Guangxi Liugong Machinery Co., Ltd.

No. 1 Liutai Road, Liuzhou, Guangxi 545007, PR China  
 T: +86 772 3886124 E: overseas@liugong.com  
 www.liugong.com

01/2025 Designed by LiuGong

Specifications and designs are subject to change without notice. Machines shown may include optional equipment. LiuGong standard and optional equipment may vary from region to region. Please consult your LiuGong dealer for information specific to your area. Engine power kW is converted to horsepower (1 kW=1.3596 ps and 1 kW=1.3410 hp) in this file.